

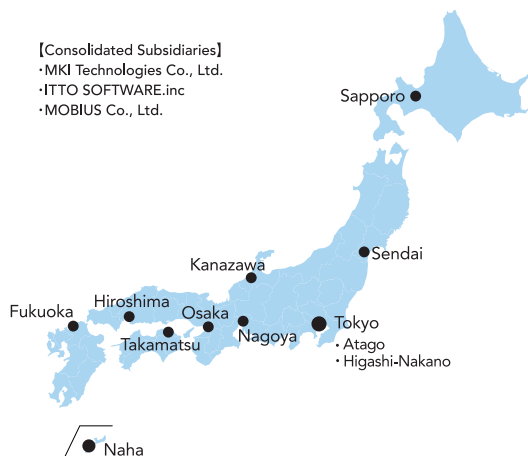
Name	MITSUI KNOWLEDGE INDUSTRY CO., LTD.
Established	June 20, 1991
President	Kengo Asano
Headquarters	Atago Green Hills MORI Tower, 2-5-1 Atago, Minato-ku, Tokyo
Capital	4.11 billion yen (as of March 31, 2023)
Consolidated Annual Sales	99.3 billion yen (as of March 31, 2023)
Shareholder	MITSUI & CO., LTD. (100%)

Group Employees 2,366 (as of March 31, 2023)

- Main Business**
- IT Management Service and Consulting
 - System Integration
 - IT Infrastructure Implementation and Services
 - Cloud Service solutions
 - Information communication equipment, Electronic products and industrial equipment

Main Banks Sumitomo Mitsui Banking Corporation
 MUFG Bank, Ltd.
 Sumitomo Mitsui Trust Bank, Limited
 Mizuho Trust & Banking Co., Ltd.

MKI Group Network : Japan



MKI Group Network : Overseas

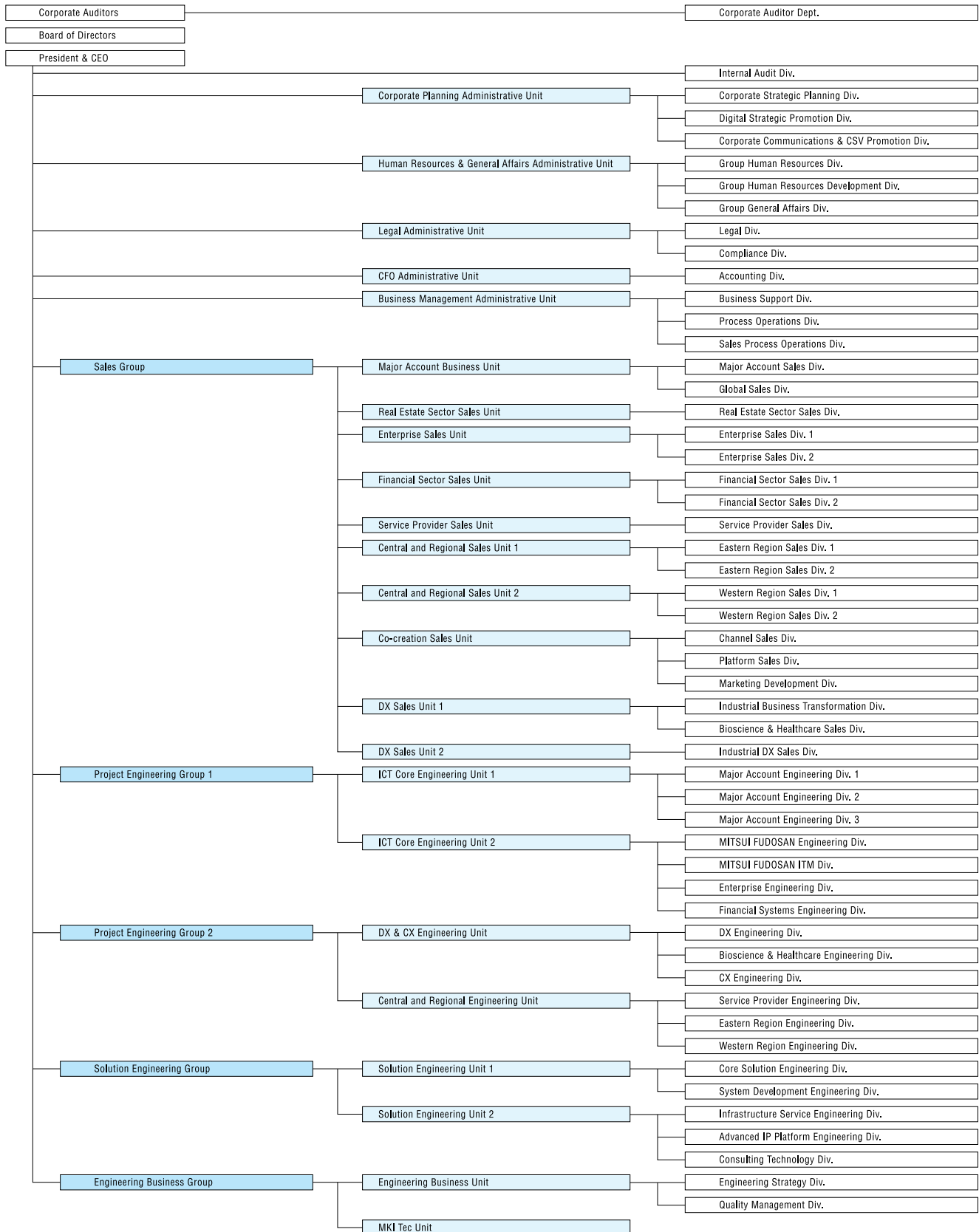


Company History

- 1967 ● Spin off from IT division of MITSUI & CO., LTD.
- 1970 ● Changed the company name to Mitsui Knowledge Industry Co., Ltd.
- 1986 ● Established MKI Software Service Co., Ltd.
- 1987 ● Established MKI (U.S.A.), Inc.
 Established MKI TECHNO-SERVICE LTD.
- 1991 ● 3Com K.K. established as a joint venture with 3Com USA to resell its network products
- 1994 ● Changed the company name to NextCom K.K.
- 2000 ● Listed on Osaka Securities Exchange's NASDAQ Japan Market (current JASDAQ Standard)
- 2001 ● Listed on the Second Section of Tokyo Stock Exchange
- 2004 ● Listed on the Second Section of Tokyo Stock Exchange
 Merged with AdamNet Ltd. and BSI Co., Ltd.
- 2005 ● Established MKI Network Solutions, Ltd.
- 2006 ● Absorbed a subsidiary Topacs, Inc.

- 2007 ● Merged with NextCom K.K. and Mitsui Knowledge Industry Co., Ltd., a subsidiary of MITSUI & CO., LTD., and changed the company name to MITSUI KNOWLEDGE INDUSTRY CO., LTD. relocating the headquarters to Chuo-ku, Tokyo.
 Consolidated two subsidiaries, MKI TECHNO-SERVICE LTD. and MKI Software Service Co., Ltd., and established MKI Technologies Co., Ltd.
 Established Silicon Valley Office (MKI (U.S.A.), Inc.)
- 2008 ● Relocated the headquarters to Minato-ku, Tokyo
- 2010 ● Absorbed a subsidiary MKI Network Solutions, Ltd.
- 2011 ● Established MKI (U.K.), LTD
 Established Singapore Branch
 Established Seattle Office (MKI (U.S.A.), Inc.)
- 2012 ● Established Advanced Technology Center at Higashi-Nakano Office
- 2015 ● Became a wholly-owned subsidiary of MITSUI & CO., LTD.
- 2017 ● Established Houston Office (MKI (U.S.A.), Inc.)
- 2020 ● Incorporated MKI IT SOLUTIONS (ASIA PACIFIC) PTE. LTD.
- 2021 ● Absorbed Mitsui Bussan Electronics Ltd.
 Acquired ITTO SOFTWARE.inc and made it a consolidated subsidiary
- 2023 ● Acquired MOBIUS Co., Ltd. and made it a consolidated subsidiary

Organization



- Consolidated Subsidiaries**
- MKI Technologies Co., Ltd.
 - MKI IT SOLUTIONS (ASIA PACIFIC) PTE. LTD.
 - MKI (U.S.A), INC.
 - MKI (U.K.), LTD
 - ITTO SOFTWARE,inc
 - MOBIUS Co., Ltd.